



## KIA Genuine Accessories

Vehicle Model  
Model Year

Sorento w/ Panoramic Roof  
2014~

Accessory  
Difficulty

Crossbars  
A

- Accessory Installation

Part No.

1U021-ADU20

Note: Difficulty stated above reflects the minimum level of expertise required to install the accessory  
( A ) Customer ( B ) Dealer Technician ( C ) Master Technician

### Instructional Symbols / Definitions



Denotes warnings that may lead to serious physical injury or vehicle damage.



Denotes quality processes to be checked prior to moving to the next step.

Denotes safety equipment required to be used such as a mask, goggles, rubber gloves, and hearing protection.



Denotes cautions to be taken to avoid physical injury or electronic component damage.



Denotes specific tools that are necessary to complete the step.



Denotes cautions to be taken to avoid vehicle and component damage.



Denotes instructional steps necessary to complete the process.



Mask



Goggles

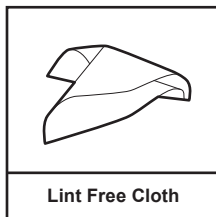
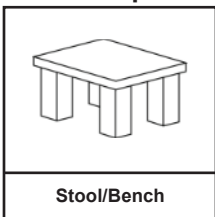


Rubber Gloves



Hearing Protection

### Basic Required Hand Tools



### Notes to the Installer:

Read the entire installation pamphlet prior to beginning the installation of the accessory.

Ensure that the vehicle is properly protected in the area that the accessory is to be installed.

To prevent vehicle damage, never place tools on top of painted surfaces, seats, dash pad, console or floor carpet / mat.

Always wear appropriate safety gear to include gloves and eye protection when required.

## KIA Genuine Accessories

### Kit Overview

**1** Front Crossbar (longer)

**2** Rear Crossbar (shorter)

**3** Key

**4** Instructions

**5** Quick Reference Guide (QRG)

**6** Plastic Bag

**7** Round Stickers

**8** LH Warning Label

**9** RH Warning Label

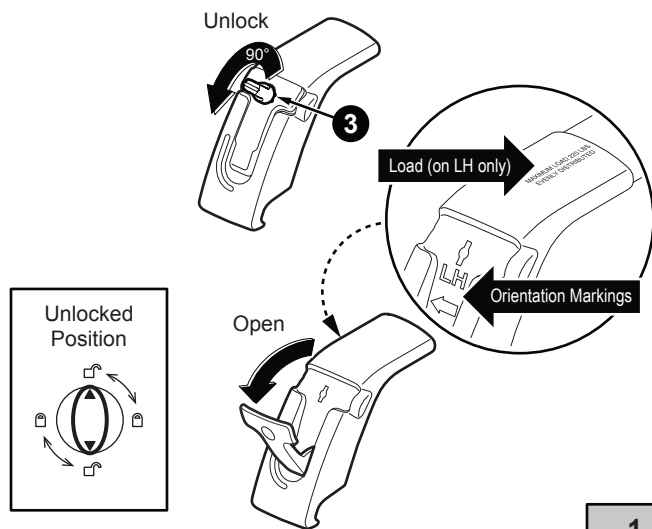
**WARNING:**

- Do not exceed manufacturer's roof load limits of 165 lbs / 75 kg (evenly distributed).
- Make sure panoramic window in the roof is closed when installing or removing the crossbars.
- Make sure crossbars are fastened securely to the side rails before sliding the panoramic roof.

No.	Qty.	Description	No.	Qty.	Description
1	1	Front Crossbar (longer)	6	1	Plastic Bag
2	1	Rear Crossbar (shorter)	7	4	Round Stickers
3	2	Key	8	1	LH Warning Label
4	1	Instructions	9	1	RH Warning Label
5	1	Quick Reference Guide (QRG)			

## KIA Genuine Accessories

### Locate Front Crossbar (LH detail shown)



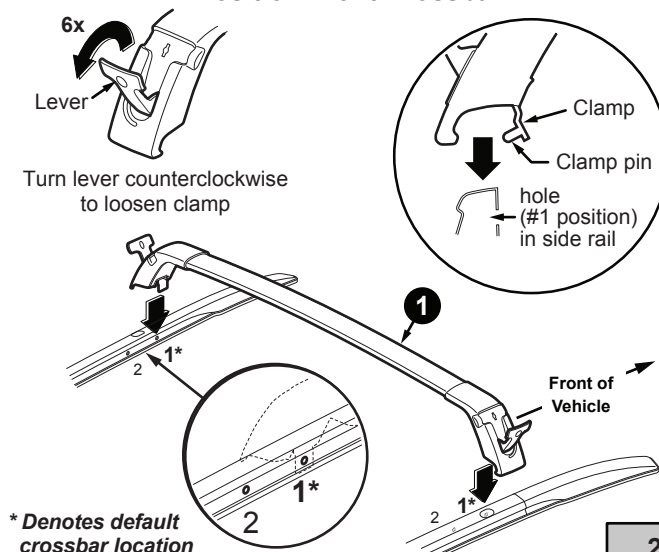
1

#### NOTE

1. Locate the front crossbar (longer bar). Using the supplied key unlock the levers by turning lock counterclockwise 90°. Make sure to match the triangles with the unlock graphic before attempting to open the lever.

2. With levers open note the markings which indicate orientation on vehicle (LH side and front of vehicle arrow).

### Position Front Crossbar



2

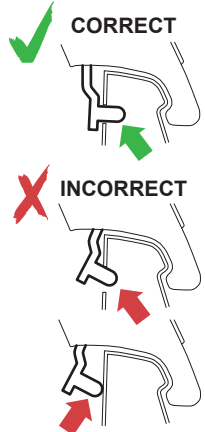
#### NOTE

1. Prior to positioning, loosen both levers by turning them counterclockwise 6 turns to allow the clamp pin enough clearance to place the crossbar over the rail. *Do not over turn (loosen) the lever so that it detaches from the clamp.*

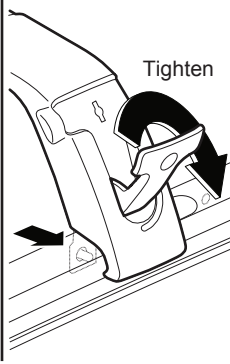
2. With levers open, position front crossbar (longer bar) over the luggage rack side rail on vehicle. Line up crossbar lower clamp pin with the hole (#1 position) in the side rail.

### Secure Front Crossbar (RH shown, LH similar)

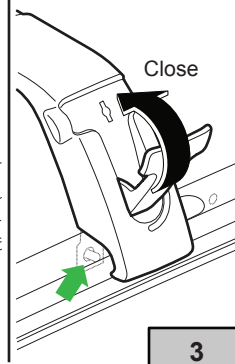
Align clamp pin with side rail hole #1.



Turn lever handle clockwise until tight, then back off a turn.



Close lever. **DO NOT FORCE LEVER TO CLOSE.** Pin must be aligned properly in hole.



3

#### NOTE

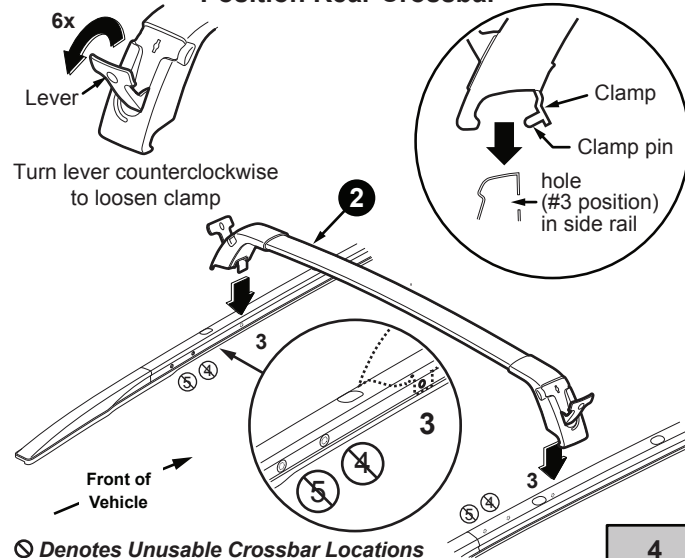
1. With clamp pin aligned to hole, tighten lever by turning clockwise – after lever is tight, bottoming out on support, back off until lever lines up with opening in support and close lever to tighten on rail. Repeat for opposite side of crossbar.

NOTE: If necessary, the clamp can be tightened/loosened by rotating the open lever clockwise/counterclockwise to adjust the fit. **DO NOT over/under tighten.**



**WARNING:** Misaligned pin can cause clamp to break and can cause crossbar separation from the vehicle resulting in product failure and vehicle damage.

### Position Rear Crossbar



4

#### NOTE

1. Prior to positioning, loosen both levers by turning them counterclockwise 6 turns to allow the clamp pin enough clearance to place the crossbar over the rail. *Do not over turn (loosen) the lever so that it detaches from the clamp.*

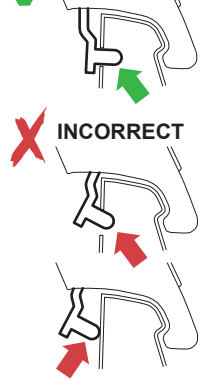
2. With levers open, position rear crossbar (shorter bar) over the luggage rack side rail on vehicle. Line up crossbar lower clamp pin with the hole (#3 position) in the side rail. Rear Crossbar has only one installed position.

## KIA Genuine Accessories

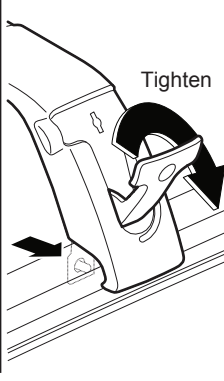
### Secure Rear Crossbar (RH shown, LH similar)

Align clamp pin with side rail hole #3.

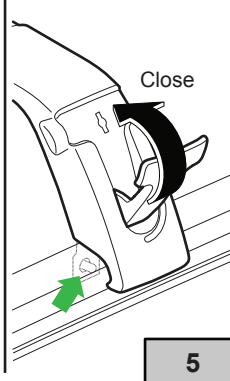
**CORRECT**



Turn lever handle clockwise until tight, then back off a turn.



Close lever. **DO NOT FORCE LEVER TO CLOSE.** Pin must be aligned properly in hole.



5

**NOTE**

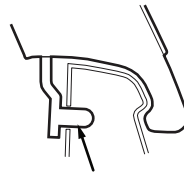
1. With clamp pin aligned to hole, tighten lever by turning clockwise – after lever is tight, bottoming out on support, back off until lever lines up with opening in support and close lever to tighten on rail. Repeat for opposite side of crossbar.

**NOTE:** If necessary, the clamp can be tightened/loosened by rotating the open lever clockwise/counterclockwise to adjust the fit. **DO NOT over/under tighten.**



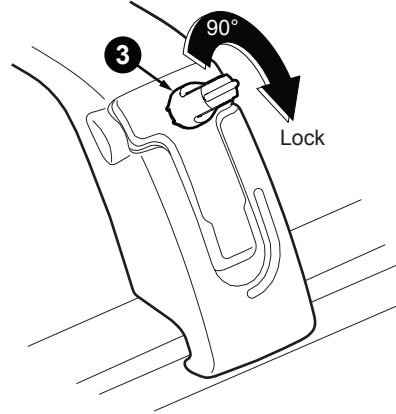
**WARNING:** Misaligned pin can cause clamp to break and can cause crossbar separation from the vehicle resulting in product failure and vehicle damage.

### Lock Crossbars

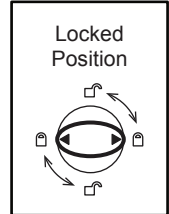


Verify clamp pin is fully engaged in rail

**CAUTION:** Incorrect pin engagement can cause the clamp to break.



Locked Position



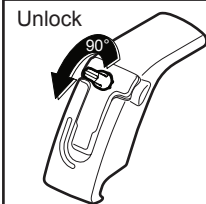
6

**NOTE**

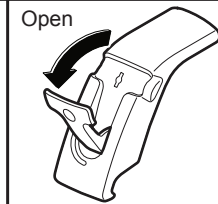
1. Once front and rear crossbars are verified to be secure and clamp pins in place, use the supplied key and lock the levers by turning clockwise 90°. Make sure to match the triangles with the lock graphic and verify lock by gently lifting on lever.

### Adjusting Front Crossbar Position

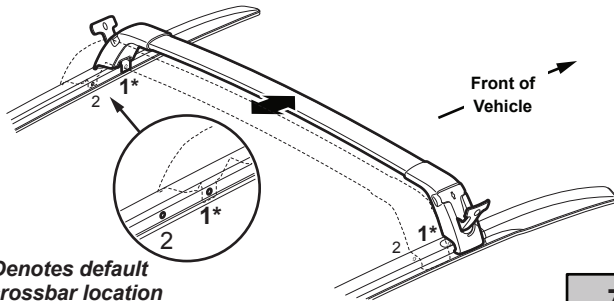
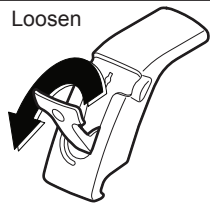
Unlock



Open



Loosen



\* Denotes default crossbar location

7

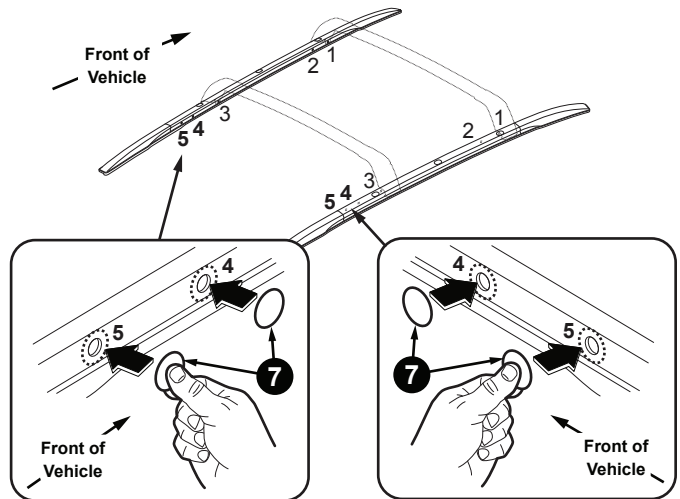
**NOTE**

1. To adjust front crossbar position, unlock and lift levers on both sides to release crossbar. Loosen the handles by turning counterclockwise a few times to allow the pin in the clamp to come out of the hole in the rail.



Do not slide into position, lift slightly, move to new hole location, close and lock the levers. There are only 2 positions for front crossbar adjustment (2 holes). Rear Crossbar has 1 installed position, other positions must be covered by tape included in kit.

### Install Round Stickers



Lint Free Cloth and 50/50 Isopropyl Alcohol (70%) and Water.

8

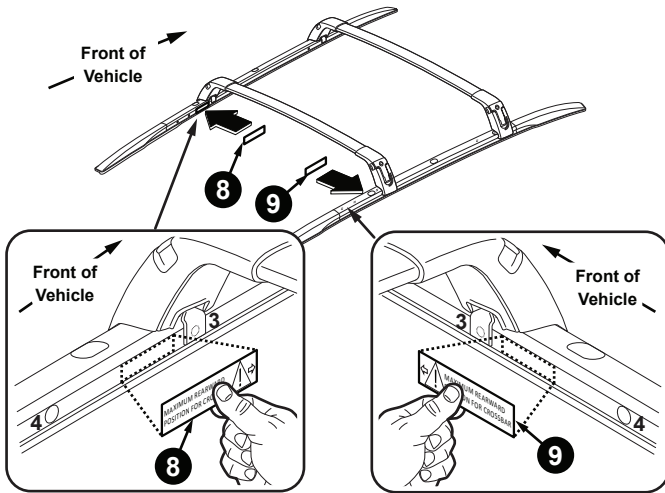
**NOTE**

1. Using a lint free cloth and 50/50 isopropyl alcohol (70%) and water, thoroughly clean area and allow to completely dry before continuing installation. Ensure area is completely free of dirt, grease or any other type of debris.

2. Note hole positions on side rails. Peel adhesive backing away from sticker. Discard backing. Place round stickers centered over the last 2 rearward holes on the side rails (Positions #4 and #5).

## KIA Genuine Accessories

### Install WARNING Labels



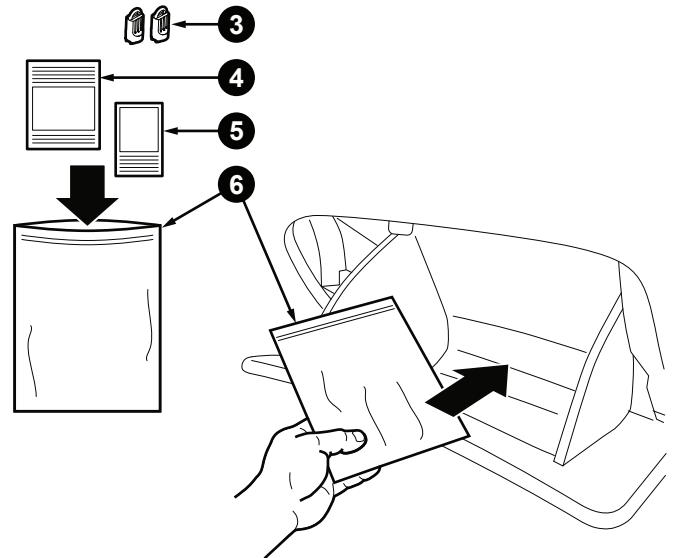
Lint Free Cloth and 50/50 Isopropyl Alcohol (70%) and Water.

9

NOTE

1. Using a lint free cloth and 50/50 isopropyl alcohol (70%) and water, thoroughly clean area and allow to completely dry before continuing installation. Ensure area is completely free of dirt, grease or any other type of debris.
2. Peel adhesive backing away from sticker. Discard backing. Place warning label directly behind the rear crossbar (hole position #3).
3. Position sticker rearward of rear crossbar, inside the rail. Arrow should point to hole #3.

### Keys / Instruction / QRG Storage






10


NOTE

1. After installation place both keys, quick reference guide (QRG), and installation instructions in enclosed plastic bag.
2. Place bag in glove box.

## KIA Genuine Accessories Function Check

Items To Be Checked	Results of the Check
 With levers closed and clamp pins secure, ensure the crossbars are in a locked position by attempting to move the crossbars forward and rearward.	Crossbars should not move forward or rearward.
 Check that all crossbars levers are locked and can not be lifted.	The levers should not move when the lock is in the lock position.
 Make sure crossbars are fastened securely to the side rails before sliding the panoramic roof.	Crossbars are snug to the side rails and do not move.

## Visual Check

Items To Be Checked	Results of the Check
 Verify correct orientation of crossbar	Wind noise reduced

